

**Patriarchal Age- before the flood.**

**Gen 3:14-24;  
Sins Consequences  
Graeme Morrison**



# Old Testament

## Law

Deuteronomy  
Numbers  
Leviticus  
Exodus  
Genesis

## Historical Books

Ezra  
Nehemiah  
Ezra  
2 Chronicles  
1 Chronicles  
2 Kings  
1 Kings  
2 Samuel  
1 Samuel  
Ruth  
Judges  
Joshua

## Poetic Books

Song of Songs  
Ecclesiastes  
Proverbs  
Psalms  
Job

# Old Testament

## Major Prophets

Daniel  
Ezekiel  
Lamentations  
Jeremiah  
Isaiah

## Minor Prophets

Malachi  
Zechariah  
Haggai  
Zephaniah  
Habakkuk  
Nahum  
Micah  
Jonah  
Obadiah  
Amos  
Joel  
Hosea

# **The First Sin.**

## **Curses From God:-**

**To the Serpent. (3:14-15;)**

**Go on belly and eat dust.**

**Enmity between you and the woman.**

**To the Woman. (3:16;)**

**Bring forth children in pain.**

**Husband shall rule over you.**

**To the Man. (3:17-19;)**

**Ground cursed.**

**Eat bread by your sweat.**

**To dust you shall return.**

## THE PROPHECY OF THE SEED.

The first prophecy of a coming Saviour was **not made to either the man or the woman, but to the serpent.**

“And the Lord said to the serpent, “Because you have done this, cursed are you more than all cattle, and more than every beast of the field; on your belly shall you go, and dust shall you eat all the days of your life.” (Genesis 3:14;)

The **serpent is cursed in a greater way** than all cattle or beasts of the field. All of the creation will come under a curse, but **the curse against the serpent will be of a greater nature.** His will be a special curse.

Gen 3:14; “And the Lord said to the serpent, “Because you have done this, cursed are you more than all cattle, and more than every beast of the field; on your belly shall you go, and dust shall you eat all the days of your life.”

**Keil and Delitzsche** point out that **the punishment** of the serpent **corresponded to the crime.**

**It had exalted itself above the man;**  
therefore upon its belly it should go,  
and dust it should eat all the days of its life.

**Warren Gage** points out that **this punishment** upon **the serpent** and **the woman** and **the man** each carry a sort of **retributive irony.**

## Examples of retributive irony

**The Serpent that had been  
more crafty than  
any beast of the field...**

**...is now made lower than  
all of the other animals.**

**Satan bruises Christ on the heel...**

**...in the process is bruised  
on the head.**

**The woman who desires  
to rule over her husband...**

**...finds that it is he  
who shall rule over her.**

**Man made of dust who  
would rise to be like God...**

**...is returned to dust again**

**Warren Gage reflects further on this theme  
as he points out:- Likewise **the Philistines** make  
**sport** with **Samson** in the temple. (Judges 16:30;)**

**The wicked prepare a pit for David. (Psa 9:15-16;)  
Hamon prepares a gallows for Mordecai. (Esth 7:10;)  
and Satan erects a cross for Christ. (1 Cor 2:8;)**

Gen 3:14; “And the Lord said to the serpent, “Because you have done this, cursed are you more than all cattle, and more than every beast of the field; on your belly shall you go, and dust shall you eat all the days of your life.”

Nor are these the only **examples of such irony** to be **found in the Pentateuch**.

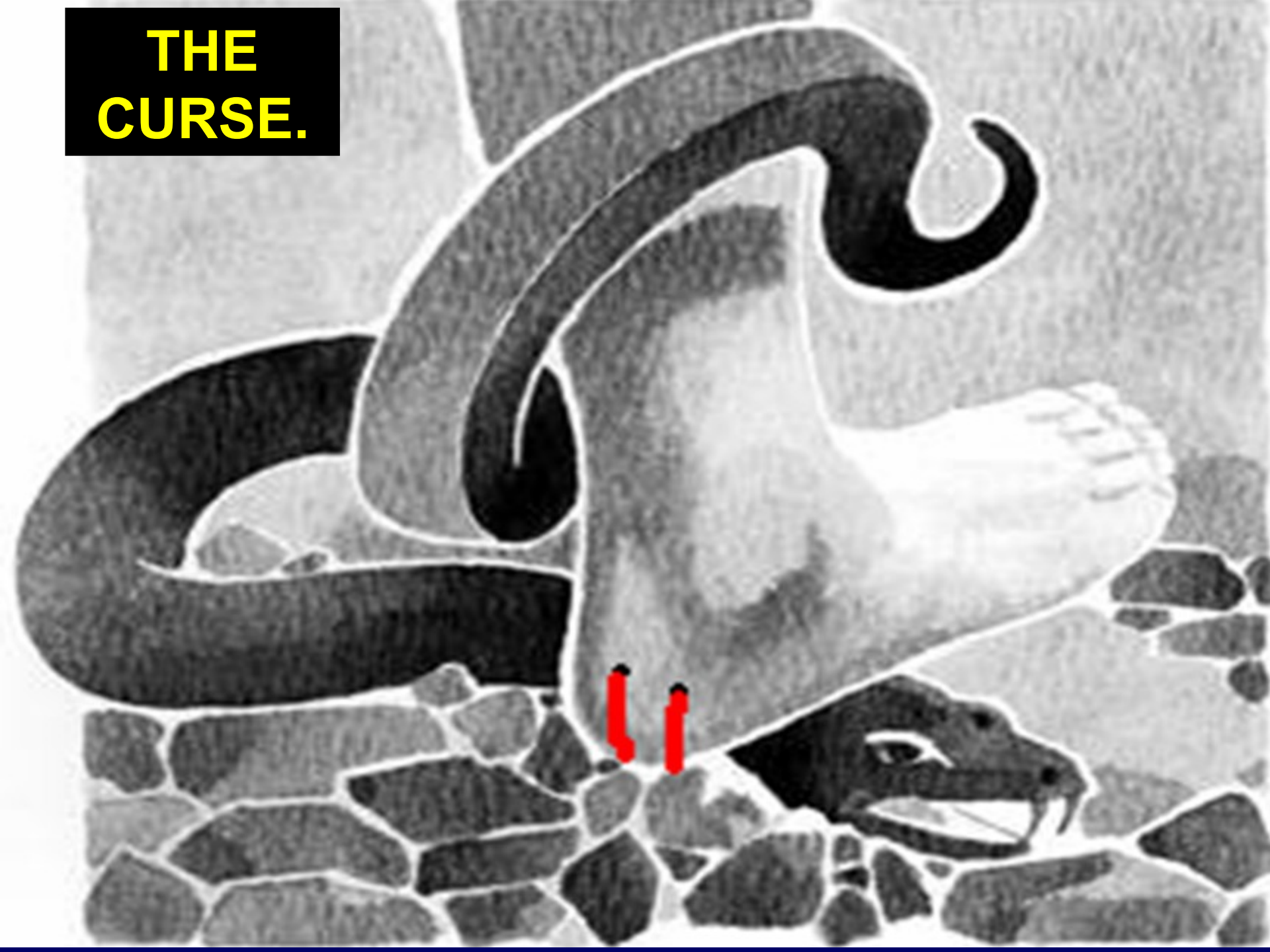
They are seen in the way **Jacob lied** to his father by wearing the skin of a goat, only to have **his sons lie** to him when they brought the coat of Joseph stained with the blood of a goat.

They are seen in the **brothers who sell Joseph** into slavery, only to **find themselves bowing down before him** at a later date.

They are seen in **the pharaoh who orders newborn Jewish males** to be **thrown into the Nile**, sees **his own armies drowned in the Red Sea**.



**THE  
CURSE.**





Gen 3:14; “And the Lord said to the serpent, “Because you have done this, cursed are you more than all cattle, and more than every beast of the field; on your belly shall you go, and dust shall you eat all the days of your life.”

**The nature of the snake will henceforth serve as a symbol.** It shall slide along the ground as the lowest of all possible creatures.

That does not necessitate us concluding that **the serpent originally walked with legs,** though this is the interpretation that was regularly given by the rabbis.

**What it means is that when you look at a snake, you will be reminded that there is a curse upon those who set themselves against the Lord and that there is coming a day when all of the Lord’s enemies will be brought low.**

Gen 3:15; "From now on, you and the woman will be enemies,  
and your offspring and her offspring will be enemies.  
He will crush your head, and you will strike his heel."

**God begins by speaking to the serpent.**

**But it seems evident that there comes a time  
when He is not just talking about snakes,  
but is addressing the real power  
behind the serpent - the Devil.**

**This is perhaps the most important verse  
in the entire Old Testament.**

**It sets forth the pattern and the message  
of the rest of the Bible.**

**The first prophecy of a coming Saviour  
(the Messiah) was not made to either  
the man or the woman, but to the serpent.**

Gen 3:15; “From now on, you and the woman will be enemies,  
and your offspring and her offspring will be enemies.  
He will crush your head, and you will strike his heel.”

This **passage goes on** to speak of the  
**seed of the woman** and the **seed of the serpent**  
which have Messianic implications,  
but first it speaks of the serpent and the woman.  
**Does this mean that women do not like snakes? No.**

**The conjunction** between these two phrases  
can take the **role of definition**.

**Thus we could understand this to say:-**  
“And I will put **enmity** between you and the woman,  
**EVEN** between your seed and her seed...”

Gen 3:15; “From now on, you and the woman will be enemies,  
and your offspring and her offspring will be enemies.  
He will crush your head, and you will strike his heel.”

**Viewed this way, this passage is not saying something between women versus snakes or even between women and Satan.**

**Instead these two parties are seen in their representation of the seed that follows:-**

“I Will Put Enmity...”		
The Serpent	Between	The Woman
His Seed		Her Seed
Shall be bruised on the head		Shall be bruised on the heel.

Gen 3:15; "From now on, you and the woman will be enemies,  
and your offspring and her offspring will be enemies.  
He will crush your head, and you will strike his heel."

**This is the beginning of a spiritual war.**

**The initial antagonists of this war**

**The war extends to their progeny.**

**And their progeny includes everyone  
that exists. You may not have realized it,  
but you were born onto a battlefield.**

**There is a cosmic conflict going on.  
Things are not the way they were supposed to be.**

**This world does not work  
the way in which it was originally designed.**

**Bad things happen on a battlefield  
and bad things are happening in the world.**

Gen 3:15; "From now on, you and the woman will be enemies,  
and your offspring and her offspring will be enemies.  
He will crush your head, and you will strike his heel."

**The good news is that we know the end of the story.**  
**It is foretold in the prophecy of this verse.**

**There are two bruising that take place in this verse.**  
**These affect different portions of the body**  
**and they affect two different subjects.**

<b>The Seed of the Serpent</b>	<b>The Seed of the Woman</b>
<b>Points to Satan</b>	<b>Points to Jesus Christ</b>
<b>He receives a wound to the head - this is a fatal wound.</b>	<b>He receives a wound to the heel - painful not fatal.</b>
<b>He was fatally bruised for all eternity.</b>	<b>He was temporarily bruised while on the cross.</b>



Gen 3:15; "From now on, you and the woman will be enemies,  
and your offspring and her offspring will be enemies.  
He will crush your head, and you will strike his heel."

Though this **ultimately** points  
to **Satan** and to **Jesus Christ**.

**This is also the story of the entire human race.**

**All people are in either one of two groups.**

**They are following one of two seeds.**

**The seed of the serpent is Satan.** He is the way of rebellion  
against God. He is the voice of independence.

**The seed of the woman is Jesus.**

**He is the One whose "heel" was crushed by Satan.**

But He was pierced through for our transgressions,  
He was crushed for our iniquities; the chastening for our  
well-being fell upon Him, and by His scourging we are healed.

All of us like sheep have gone astray,  
each of us has turned to his own way; but the Lord has  
caused the iniquity of us all to fall on Him. (**Isaiah 53:5-6;**)

Gen 3:15; "From now on, you and the woman will be enemies,  
and your offspring and her offspring will be enemies.  
He will crush your head, and you will strike his heel."

When **Jesus died upon the cross**,  
it was no mere human death that He died.  
**His death was special** because it also involved  
**a spiritual death. (separation.)**

He was judged by God  
as if **HE** were **a guilty sinner**.  
**Our sins were laid upon Him.**

**Gen 3 15;**  
**Provides the theme of the rest of Genesis.**  
**This will be a book about two seeds:-**



Gen 3:15; "From now on, you and the woman will be enemies,  
and your offspring and her offspring will be enemies.  
He will crush your head, and you will strike his heel."

**"He," the woman's Offspring is Jesus.**  
(Galatians 4:4).

**He was an Offspring of woman and not of man.**

**Jesus had an earthly mother but not an earthly  
father. No father of Adam's line begat him.**

**Some people say:- The significance of this seems to  
be that the inheritance of the effects of the original  
sin on the flesh (death of the body) comes through  
the father's genes and not through the mother's.**



**They say Jesus Did Not Have to Die a Natural Death!**

Gen 3:15; "From now on, you and the woman will be enemies,  
and your offspring and her offspring will be enemies.  
He will crush your head, and you will strike his heel."

**They say Jesus Did Not Have to Die a Natural Death!**

The body that Jesus had was **not subject to death**  
and **was the same body he was resurrected in.**

**They say** He still had the nail holes in His hands and  
feet and the spear wound in His side but **that body**  
**was alive, even without the blood.** (John 20:27-28;)

**They say** He died only because  
**He came under the curse of the law** when  
He was **hung on a tree** and so **became sin for us.**  
(Galatians 3:13-14; 2 Corinthians 5:21;)



Gen 3:15; "From now on, you and the woman will be enemies,  
and your offspring and her offspring will be enemies.  
He will crush your head, and you will strike his heel."

**I think this takes the text too far:**

**I think the reason there were two trees  
mentioned was that:-**

**1) The tree of good and evil was the test  
that resulted in SPIRITUAL death,  
bringing in guilt and separation from God  
and all the other SPIRITUAL consequences.**

Gen 3:15; "From now on, you and the woman will be enemies,  
and your offspring and her offspring will be enemies.  
He will crush your head, and you will strike his heel."

## **2) The tree of life was that which prevented PHYSICAL death.**

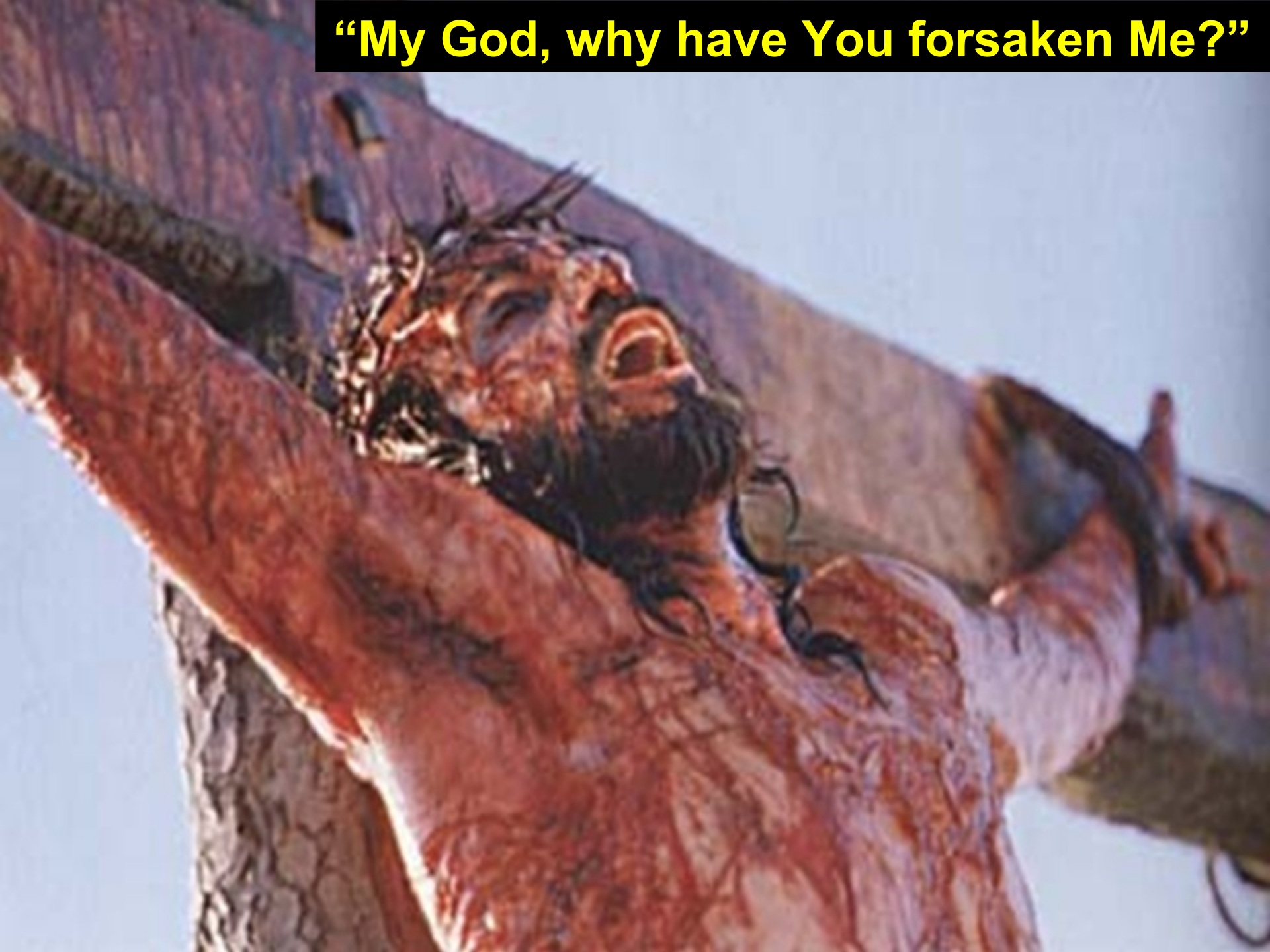
**When they sinned** are were told  
to leave the garden **they lost access**  
to that **which prevented the aging process,**  
**resulting in PHYSICAL death.**

**The body naturally dies off and cells  
are replaced every 7 years.**

**meaning that every part of the body changes.**

**IN DYING WE WILL DIE. In His humanity  
the Christ experienced the aging process**

**“My God, why have You forsaken Me?”**



Gen 3:15; "From now on, you and the woman will be enemies,  
and your offspring and her offspring will be enemies.  
He will crush your head, and you will strike his heel."

**Peter said that it was impossible that death  
could hold Jesus in its grip. (Acts 2:24;)**

**Jesus suffered physical death** to pay  
the penalty the law demanded for coming  
under its curse for hanging on a tree.

But He also **suffered the spiritual penalty  
in His humanity** by being **separated** from God.  
(Matthew 27:46;)

**Spiritual death, as mentioned before,  
is separation from God.**

Gen 3:15; “From now on, you and the woman will be enemies,  
and your offspring and her offspring will be enemies.  
He will crush your head, and you will strike his heel.”

**He Tasted Death for Every Man:-** Hebrews 2:9;  
“He suffered death, so that by the grace of God  
He might taste death for everyone.”

The death He “**tasted**”  
so **we won’t have to taste it** is spiritual death  
because **we will all taste the death of the body.**

**Jesus’ resurrection guarantees our resurrection  
in a new, spiritual, glorious immortal body  
like the one He now has.  
(Philippians 3:20-21;)**

Gen 3:15; "From now on, you and the woman will be enemies,  
and your offspring and her offspring will be enemies.  
He will crush your head, and you will strike his heel."

## **Crush Head/Bite Heel.**

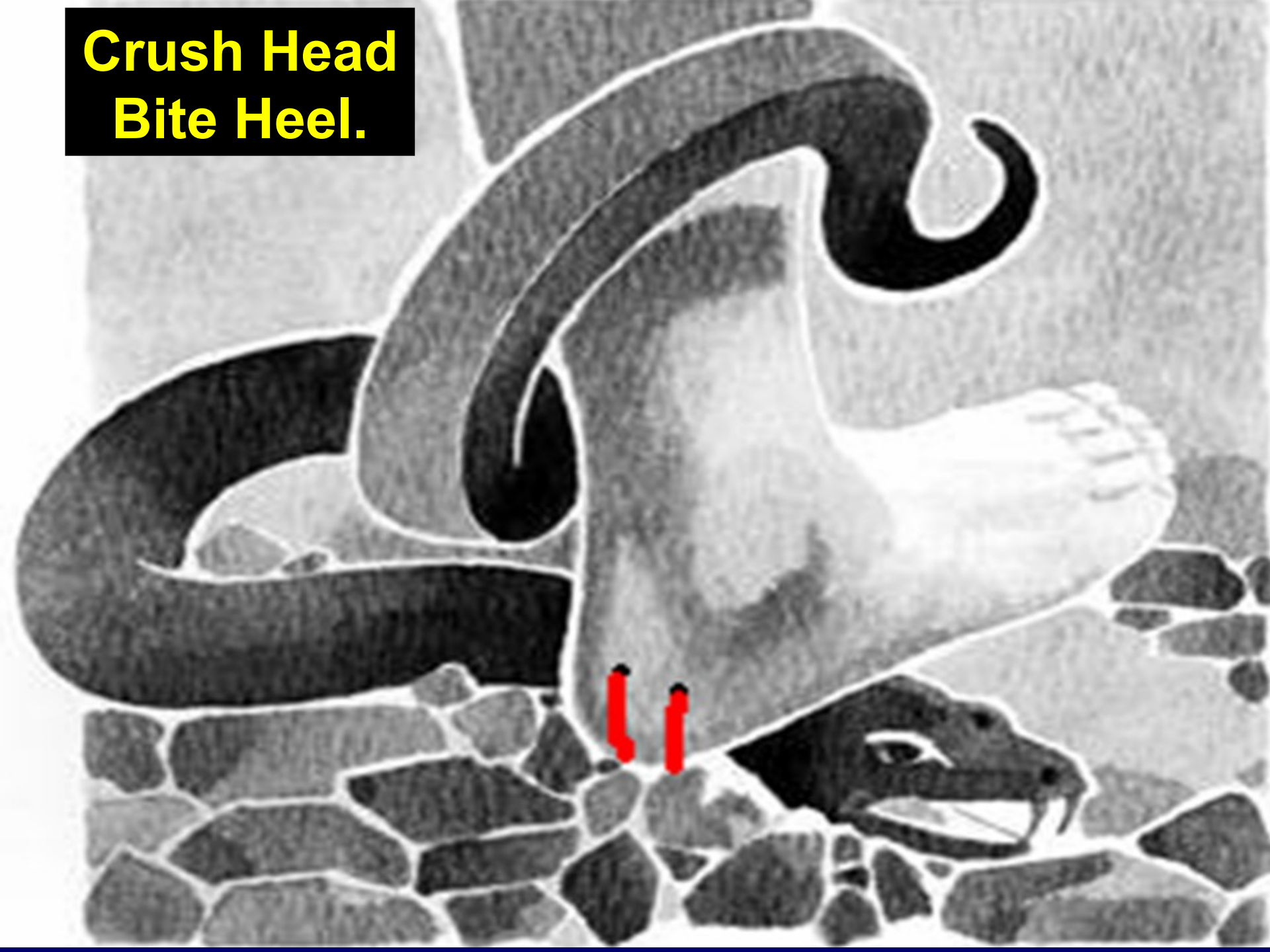
**Satan's bite on Jesus' heel was cause  
of great suffering and even of physical death  
but not eternal death.**

**This transaction, the crushing of Satan's head  
and the injuring of Jesus' heel  
from "stomping" on Satan's head,  
took place at the cross.**

**When Jesus stamped on Satan,  
Satan was able to sink his deadly fangs  
to bring physical death as it were, in Jesus' heel.**



**Crush Head  
Bite Heel.**



Gen 3:15; "From now on, you and the woman will be enemies,  
and your offspring and her offspring will be enemies.  
He will crush your head, and you will strike his heel."

The **crushing of Satan's head** symbolized  
a **final eternally deadly blow**. (Hebrews 2:14-15;)

**Jesus, "the seed of woman"** (Galatians 4:4;)  
was **crucified for our sins**.

In this way the **Devil bruised Jesus' heel**;  
that is, **gave Him a minor injury**.

But in rising from the dead, Jesus bruised the  
serpent's head. That is, He gave the Devil a  
**crushing blow** from which he can never recover.

**Jesus proved that we, too,**  
**may overcome death through Him.**

**Colossians 2:15;**





**Genesis is a book about two seeds.**  
God initially created all life to reproduce after  
its kind. But man rebelled and sinned against God.  
And so, a promise was given.  
It was a promise of TWO SEEDS.

The promise is found in Genesis 3:15;  
The first seed was to be the seed of the serpent.  
It was the seed of rebellion. It was the seed of sin.  
It was made up of all who walked  
in the way of Adam in turning against God.

But there is also a second seed promised.  
It is the seed of the woman. This second seed is set  
over against the first seed. The two seeds are at war  
with one another. And God has decreed  
that the second seed shall ultimately win.

From our vantage point, we know that this second seed is ultimately fulfilled in Jesus Christ - the One who was bruised for our iniquities as He crushed underfoot the Serpent's Head.

Seed of the Serpent

Seed of the Woman

Cain

Abel & Beth

Lamech

Enoch

Noah

Ham

Shem

Canaan

Abraham

Ishmael

Isaac

Esau

Jacob

**The rest of Genesis is the story of these two seeds.**

**First we read of Cain and Abel.**

**Although they are brothers descended  
From the same father and mother.**

**Cain shows himself  
to be of the spiritual seed of the serpent  
by murdering his brother.**

**But God replaces murdered Abel with Seth**

**We see the genealogy of each.**

**Cain's seed leads us to Lamech.**

**A man who is willing not only to murder a man, but  
to compose a song in which he boasts of his deed.**

**Seth's seed** leads us to **Enoch** who **walks with God**,  
and from there to **Noah**  
who is **spared the destruction** of the **Flood**.

But the story does not stop there.

**Noah has three sons**. And one of them  
performs **an evil deed** which demonstrates  
that **he is of the spiritual seed of the serpent**.

He and his **descendants through Canaan** are **cursed**  
(the impact of this was not missed on the Israelites  
to whom Moses wrote the book of Genesis).

**Noah's other son, Shem,**  
is given **the promise of blessing**.



The **Babel Rebellion** is an account of men  
trying to make a **SHEM** for themselves,  
(**Shem** is the Hebrew word for “**name**”).  
They are **dispersed among the nations**.

But one is called out  
to be a blessing to the nations.  
His name is **Abraham**.

**Abraham** has two sons.  
**One** is seen to be the seed of the serpent,  
**ISHMAEL** he is cast out.  
The **other** is of the spiritual seed of God.  
He is **ISAAC**

**Isaac also has two sons. They are twins.**  
**But one is of the spiritual seed of the serpent.**

**Esau does not hold**  
**the blessings of God in high esteem.**  
**Jacob, on the other hand, shows himself**  
**to be of the seed of the woman.**

**Jacob has 12 sons.**

**Only one of them shows from the outset that he is of the seed of the woman.**

**The others are rebellious. Two of them murder the inhabitants of a town. Another is involved in a sexual scandal. They sell their younger brother into slavery. But the Lord uses this to His own ends.**

**And all of the brothers are redeemed in Egypt. They all receive the promises of God.**

**As Moses by inspiration writes the book of Genesis,  
the children of Israel are in the wilderness.  
And the question before them is this:-**

**Which seed are they to be?  
Will they follow  
in the footsteps of the serpent?  
Or will they show themselves  
to be of the seed of the Lord?**

**Genesis will be a book about a line of children.**  
Thus, a **key word** in **Genesis** will be “**generations.**”  
The **Hebrew** word for “**generations**” is **toledoth.**

**Each new generation**  
**will determine which seed it is.**  
**Will it continue in the covenant relation**  
**to God and show itself**  
**to be a part of the promised seed?**

**Or will it turn from God to join**  
**and be a part of the seed of the serpent?**

Gen 3:16; “Then God said to the woman, You shall bear children in intense pain and suffering; yet even so, you shall welcome your husband's affections, and he shall be your master.”

## **THE CURSE ON THE WOMAN.**

There are **two parts** of this promise.  
They are presented in **two parallel couplets.**

**The first part involves the pain of childbirth.**

The **woman** had been **designed to bear children**,  
that had been a part of **the divine decree** in chapter 1

**But now there is added to this a new aspect.**

**The bearing of children would  
Be accompanied by undue pain.**

Gen 3:16; “Then God said to the woman, You shall bear children in intense pain and suffering; yet even so, you shall welcome your husband's affections, and he shall be your master.”

Notice that the first couplet contains Hebrew parallelism. It is **synonymous parallelism** so that the **second line repeats** the idea of **the first line**, albeit with different words.

**“I will greatly multiply Your pain in childbirth,  
In pain you shall bring forth children.”**

The second line is merely **repeating** the idea of the **first line**. When we come to the **second couplet**, there is **also Hebrew parallelism** at work.

**“Yet your desire shall be for your husband,  
And he shall rule over you.”**



Gen 3:16; “Then God said to the woman, You shall bear children in intense pain and suffering; yet even so, you shall welcome your husband's affections, and he shall be your master.”

This time, **it is not synonymous parallelism.**

Instead this is **antithetical parallelism.** Instead of repeating the same idea, the **second line** of the couplet **states the opposite side** of the same truth.

## The Woman

She exercised leadership in the temptation by giving the fruit to the man

She shall be ruled by her husband

## The Man

He exercised submission in the temptation by accepting that which was given him

He shall exercise dominion over her

Gen 3:16; “Then God said to the woman, You shall bear children in intense pain and suffering; yet even so, you shall welcome your husband's affections, and he shall be your master.”

Even though **the place of the woman is relegated to one of submission as well as of pain in childbirth,** the **truth is that women throughout history have generally desired both a husband as well as children.**

History bears out the fact that **man in general has subjugated and ruled over woman with LITTLE REGARD for her own personal feelings and needs.**

**In non-Christian religions and cultures, such subjugation and humiliation has been universal.**

Gen 3:16; “Then God said to the woman, You shall bear children in intense pain and suffering; yet even so, you shall welcome your husband's affections, and he shall be your master.”

It is only as **Biblical principles** are **applied** to the **marriage relationship** that this **cursing** can be **turned into blessing**

And that **the woman OUGHT** to find **herself** in a role that brings her the highest **happiness** and **fulfilment**.

**17 Then to Adam He said, "Because  
you have listened to the voice of your wife,  
and have eaten from the tree about which  
I commanded you, saying, '**You shall not eat from it**';  
**Cursed is the ground** because of you;  
In toil you shall eat of it All the days of your life.**

**18 Both thorns and thistles it shall grow for you;  
And you shall eat the plants of the field;**

**19 By the sweat of your face You shall eat bread,  
Till you return to the ground,  
Because from it you were taken; For you are dust,  
And to dust you shall return." (Genesis 3:17-19;)**

Gen 3:17; “Then to Adam He said, “Because you have listened to the voice of your wife, and have eaten from the tree about which I commanded you, saying, ‘You shall not eat from it’; Cursed is the ground because of you; In toil you shall eat of it All the days of your life.”

## **THE CURSE ON THE MAN.**

The Lord turns now to **Adam**. He has gone from **the serpent to the woman and finally to the man.**

As **President Harry Truman** said,  
“**The buck stops here.**”

**There is a threefold curse given in these verses:-**

### **1. The Ground is Cursed.**

**The earth** had been described as “**very good**” in the **first chapter of Genesis**, but this now **changes.**

That which had been **created** now enters **a process of degeneration and change.**

Gen 3:17; "Then to Adam He said, "Because you have listened to the voice of your wife, and have eaten from the tree about which I commanded you, saying, 'You shall not eat from it'; Cursed is the ground because of you; In toil you shall eat of it All the days of your life."

## **2. Man is to Experience Endless, Unproductive, Toil.**

He will spend his life in a struggle against the earth, trying to force from its resisting nature a living.

It will involve **a continuing struggle** and will **culminate in man's demise.**

## **3. Man is to Experience Death.**

**Though Adam** is going to live a very long life, the end will be inevitable. **It will result in death.**

**This process** begins **immediately.**

There is a sense in which the seeds of **each person's death** is born in them.

**Apart from the intervention of God, death is certain.**

Gen 3:17; "Then to Adam He said, "Because you have listened to the voice of your wife, and have eaten from the tree about which I commanded you, saying, 'You shall not eat from it'; Cursed is the ground because of you; In toil you shall eat of it All the days of your life."

It is **popular these days to describe death**  
as merely a natural part of life  
and **a portion of the beautiful circle of life.**  
**People who say this have not seen much of death.**

**FAR TOO OFTEN death is NEITHER beautiful**  
**or natural. It is more often ugly and unnatural.**

The **good news** of the gospel  
is that **it will not stay that way.**

The ground that was cursed with thorns  
was redeemed by the One who wore upon His head  
a crown of thorns.



Gen 3:17; “Then to Adam He said, “Because you have listened to the voice of your wife, and have eaten from the tree about which I commanded you, saying, ‘You shall not eat from it’; Cursed is the ground because of you; In toil you shall eat of it All the days of your life.”

**Jesus has purchased the redemption price**  
and there is coming a day when that **redemption**  
**will be an observed reality** and when  
**the curse will be overturned in a visible way.**

20 “For the creation was subjected to futility,  
not of its own will, but because of Him  
Who subjected it, in hope 21 that the creation itself  
also will be set free from its slavery  
To corruption into the freedom of the glory  
of the children of God. 22 For we know  
That the whole creation groans and suffers  
the pains of childbirth together until now.”  
**(Romans 8:20-21;)**

Gen 3:17; "Then to Adam He said, "Because you have listened to the voice of your wife, and have eaten from the tree about which I commanded you, saying, 'You shall not eat from it'; Cursed is the ground because of you; In toil you shall eat of it All the days of your life."

**Just as Eve** was told that she would **experience the pains of childbirth, so also the entire creation continues to experience the same birth pangs.**

**The world suffers with Eve today,**  
but there is coming a day when  
**the suffering will give way to the birth**  
**of a new heavens and a new earth.**

**It is in light of this promise that the woman is given a name pointing to this promise of life.**

Gen 3:19; "By the sweat of your face You shall eat bread,  
Till you return to the ground, Because from it you were taken;  
For you are dust, And to dust you shall return." ."

**NOW they know about evil!**

**Satan** didn't **tell them** about this or about mosquitoes. **He does not provide disclaimers.**

The **curse of death** applied to **Adam's body only**,  
that which was **formed from the dust** of the earth,  
not that which was formed within him  
from God's Spirit. Zechariah 12;

**1) The result man became a living soul.**  
**Adam was the father of our flesh; God is the Father**  
**of our spirit (Hebrews 12:9;)**



# **The Outcome of the Fall.**

**God gave us things to enjoy before the fall.**

## **Before**

**Benevolent ruler ship  
Creative accomplishment**

**Free moral agent**

**Relational**

**Intellectual creativity**

**Sex, unity & diversity**

**Unaware of Shame**

**uninhibited & free**

## **After**

**Selfish domination  
Work = Drudgery &  
identity base**

**Substantially lost**

**Can't relate - lonely**

**Rom 1:21; "futile"**

**Sexual exploitation**

**Ashamed, tied up in  
selves, afraid of God**

**Romans 1:21; "For although they knew God,  
they neither glorified Him as God nor gave thanks to Him,  
but their thinking became futile  
and their foolish hearts were darkened."**

Gen 3:20; “Now the man called his wife's name Eve,  
because she was the mother of all the living.”

The **naming of Eve** comes on the heels  
of **the pronouncements** of the Lord.

He had pronounced both a series of curses  
as well as the **seeds of a promise** that would  
**Lead to eventual salvation from that curse.**

With the curse had come death;  
but the **promise leads to a new life.**  
As if on cue, **Adam** names his wife **Eve**,  
which means **“living.”**

It seems as though he understands  
that it is **through her** that will come all human life.



**Mother of ALL the living. (Acts 17:26;)**

**This gives the lie, at least biblically, to the theory that God created other kinds of humans.**

**The genetic variability of humanity must have been encoded in the DNA of the first pair.**





Gen 3:20; “Now the man called his wife's name Eve,  
because she was the mother of all the living.”

We have **already noted** the **retributive irony**  
in **the curses** that were meted out.

There is also a **redemptive irony** at work  
in the case of the woman.

**She who was the means of the temptation  
that brought death into the world  
will become the mother of all living.**

### Examples of redemptive irony

The woman who  
was tempted to sin...

...becomes the mother  
of all living.

The weak...

...will conquer the strong

The God-man  
will die on a cross...

...to bring life to many.

Gen 3:21; “And the LORD God made garments of skin  
for Adam and his wife, and clothed them.”

**A COVERING PROVIDED.** Next the **Lord makes garments of skin** in order to clothe and hide the nakedness of Adam and Eve. Though it is not mentioned in the passage, the fact that **these garments were garments of skin** is in itself suggestive.

**It suggests that there was the death of an animal.** One of the animals that had been created by God was **taken and slain** and its skin was taken in order to be used **as clothing for Adam and Eve.**

**These skins were taken by the shedding of blood.**

The animals were innocent and picture  
**The principles of the innocent substitute.**

The coats of skin replaced  
the fig leaves of human righteousness.

Gen 3:21; “And the LORD God made garments of skin  
for Adam and his wife, and clothed them.”

If it is true that **there had not yet been any death  
in the world**, then this action would have  
**shocked** Adam and Eve to the core.

They had heard the warning **that eating of  
the forbidden fruit would result in their death**.  
They had **eaten** and **judgment** had been **pronounced**  
and **now it was time for death to take place**.

**But instead of them experiencing death,  
it is an innocent animal  
that is taken and is put to death.**

# An Object Lesson on Death.



Gen 3:21; “And the LORD God made garments of skin for Adam and his wife, and clothed them.”

**Now Adam and Eve saw what death meant.**

God had probably **killed these animals** in front of Adam and Eve as an object lesson in sacrifice.

Not nearly enough has been taught or understood about this very important transaction. **Animals, probably sheep, had once lived inside these skins.**

Some wonder where **Abel** got his idea to **sacrifice a lamb** to God. **God taught the concept of sacrifice by demonstrating the process.**

**So God offered the first sacrifice.**

**He also provided the LAST. The blood Of the Perfect Sacrifice, symbolized by the lamb, redeems the body and the soul.**



**A Law of Sacrifice.**



Gen 3:21; “And the LORD God made garments of skin  
for Adam and his wife, and clothed them.”

**The animal had not sinned.** It was **dying**,  
NOT because it had done anything wrong, but  
because **Adam and Eve HAD done something wrong.**  
**It died the death they deserved to die.**

This is a picture of **what Christ did on our behalf.**  
**He is our innocent substitute.**  
**HE died in OUR PLACE the death**  
**we deserve because of OUR SIN.**

**His righteousness is credited to us**  
**so that we are clothed in His righteousness.**

**The covering hides the shame of sin.**

(**BLOOD:** Leviticus 17:10-14; Hebrews 9:12, 22-23;  
1 Peter 1:18-19; Romans 8:23; **COVERING:** Galatians 3:27;)



# **The First Sin Continued.**

**Adam & Eve cast out of garden.**

**(3:22-24;)**

**Separated from the Tree of Life.**

**Separated from God.**

**Mankind needs A Saviour.**

**To provide access to the tree of life.**

**To reconcile man to God.**

# **Separated from the Tree of Life.**

**22 “Then the LORD God said, "Behold, the man has become like one of Us, knowing good and evil; and now, lest he stretch out his hand, and take also from the tree of life, and eat, and live forever.”**

**23 “Therefore the LORD God sent him out From the garden of Eden, to cultivate the ground from which he was taken.”**

**24 “So He drove the man out; and at the east of the garden of Eden He stationed the cherubim, and the flaming sword which turned every direction, to guard the way to the tree of life.”**

**(Genesis 3:22-24;)**

Gen 3:22; "Then the LORD God said, "Behold, the man has become like one of Us, knowing good and evil; and now, lest he stretch out his hand, and take also from the tree of life, and eat, and live forever."

It was **not that man became**  
in **nature** and **character**  
like God the Father, Son and Holy Spirit.

It was only that **man learned the guilt**  
**and consequence of rebellion** against  
divine law that only God can establish.

Gen 3:22; "Then the LORD God said, "Behold, the man has become like one of Us, knowing good and evil; and now, lest he stretch out his hand, and take also from the tree of life, and eat, and live forever."

**Any thought that man in his fallen state constituted any kind of threat to the supremacy of the Creator should be rejected.**

**It would have been an unqualified disaster if man had eaten of the tree of life and in consequence lived forever in his shameful and humiliating condition.**

**What man had already done was bad enough, but to prevent an even greater tragedy, God drove him out of the Paradise of Eden,**



**Driven out of  
the Garden.**

Gen 3:24; "So He drove the man out; and at the east of the garden of Eden He stationed the cherubim, and the flaming sword Which turned every direction, to guard the way to the tree of life."

**Man is driven from the garden** because **the tree of life was there** and **unredeemed sinners** may not eat of it **until its fulfillment in Christ** has taken place. (Revelation 2:7;)

**The east side of Eden. "The sun rising."**  
The entrance to ancient holy places **usually faced the sunrise.** (Numbers 3:38;)

**Notice there is not a gate but a sword** that **symbolizes the Word of God.**

**Eden must have had an unscalable wall around it with one entrance. Now it has been shut to the man and his wife**



Gen 3:24; “So He drove the man out; and at the east of the garden of Eden He stationed the cherubim, and the flaming sword Which turned every direction, to guard the way to the tree of life.”

This is a familiar passage to us, but did you ever wonder if it had **a special significance to the Israelites in the wilderness?**

After all, they were **the original recipients of the book of Genesis.**

It was written to THEM just the way that **Galatians** was written to the Galatians or **Romans** was written to the believers in Rome.

If we are to understand it, then we must put ourselves into their shoes, (or sandals, as the case may be).



Gen 3:24; “So He drove the man out; and at the east of the garden of Eden He stationed the cherubim, and the flaming sword Which turned every direction, to guard the way to the tree of life.”

Indeed, it seems **possible** for **the idea** of the **"east"** was the direction of the **Garden**. (Genesis 2:8;)

It was the direction of **Nod**. (Genesis 4:16;)

It was the direction of the **Tower of Babel**. (Gen 11:2)

**Notice the parallels between  
Adam and the people of Israel.**

Adam	The People of Israel
He has been banished from the garden.	They have departed from the "garden of Egypt" and are now in the Sinai Wilderness.
Adam leaves the garden by the eastern route.	The Israelites also leave Egypt by the eastern route.

As **the Israelites** are encamped in the Wilderness, the **presence of the Lord** is seen in the **cloud by day** and the **pillar of fire by night** as it hovers over the Tabernacle.

“The tents of Moses and Aaron and the sons of Aaron (the priests) were pitched on **the east side** of the entrance of the Tabernacle.” Numbers 3:38;

**To the east** of the Tent of Meeting is a **FLAMING altar**. It “**guards**” the entrance to the Tent.

**Only after a lamb has been slain and its blood applied to the altar can the worshipers enter within.**

Before the **Tabernacle** was the **Laver of Water** it was called **the SEA**. (could this relate to the rivers which flowed out of Eden?).

When the priest entered into **the Tabernacle**,  
the **light within the Tent** was provided  
by a **lamp stand** which was crafted into the  
image of **a TREE with six branches** going out of it.  
(Exodus 37:17-22;)

**Within the Holy of Holies** was  
the Ark of the Covenant, topped by **the Mercy Seat**  
and overshadowed with **two CHERUBIM** of gold,  
one at each end of the Mercy seat.

**The New Jerusalem** is described in terms  
of **a Garden, the Tree of Life**,  
a river flowing through it, and **the presence of God**,  
no longer guarded by cherubim,  
but **open to fellowship with His restored bride**.

Gen 3:24; “So He drove the man out; and at the east of the garden of Eden He stationed the cherubim, and the flaming sword Which turned every direction, to guard the way to the tree of life.”

3:24; tells us that **at the east of the garden of Eden He stationed the cherubim.** The word translated “stationed” is the Hiphil imperfect of shakan and is usually translated, “to dwell.”

It is from this **same word** that we get the familiar “**Shekinah Glory,**” the reference to God’s presence that dwelled and abided with His people.

**Those in Christ are already tasting the indwelling presence of God and access to God through prayer.**

**Instead of nakedness,  
we are clothed in the righteousness of Christ.**

Gen 3:24; “So He drove the man out; and at the east of the garden of Eden He stationed the cherubim, and the flaming sword Which turned every direction, to guard the way to the tree of life.”

**One day we shall see Him and be like Him.**  
There will come a day when **we will again come into the presence of the Lord.**

Yet the salvation that God provides is **more than a mere recovery of lost ground.**  
It does **more than deal with the effects of sin.**

It **transforms the work of sin** and changes it into something grand and glorious.  
**We are clothed in the righteousness of Christ.**

**Instead of a garden, we are given a city that is also a paradise.**





Copyright 2003 Ted Lange

**Cherubim.**

Gen 3:24; “So He drove the man out; and at the east of the garden of Eden He stationed the cherubim, and the flaming sword Which turned every direction, to guard the way to the tree of life.”

**“Cherubim” is the plural of “cherub.”**

The cherubim were **the guardians of God’s glory.**

They are described in **Ezekiel 1:9-10;**)

**There were cherubim and seraphim.**

Both were **composite creatures**  
and **protectors of God’s glory.**

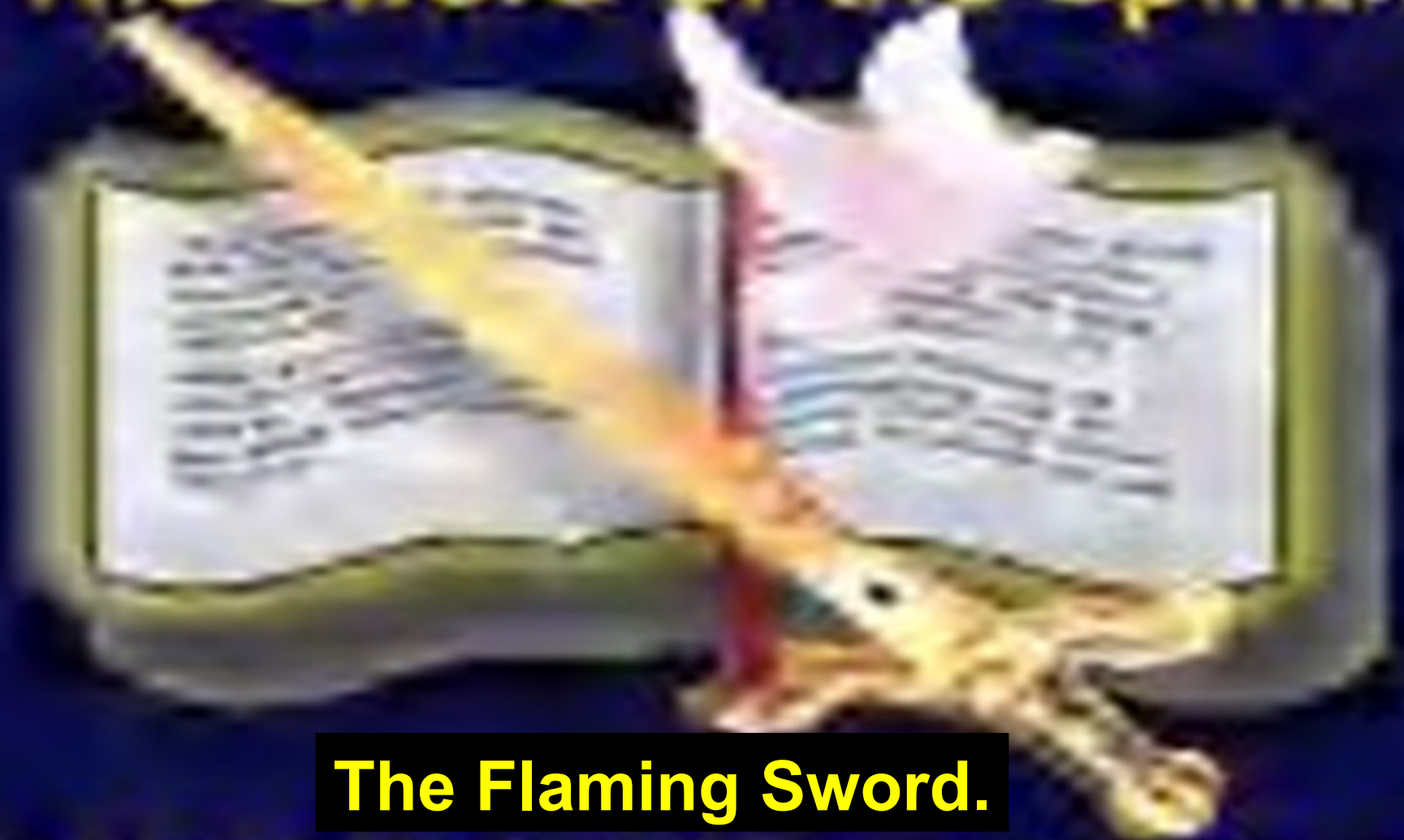
**The cherubim**, each with four wings,  
carried God’s portable throne and were below it.

**The seraphim**, with six wings, were above it.

See **Isaiah 6**; Both were  
**combined in a single creature in Revelation 4;**



The Sword of the Spirit...



**The Flaming Sword.**

which is the Word of God

Gen 3:24; “So He drove the man out; and at the east of the garden of Eden He stationed the cherubim, and the flaming sword Which turned every direction, to guard the way to the tree of life.”

**This sword may be a symbol for the Word of God**  
(Hebrews 4:12; Revelation 1:16;)

In order **to re-enter the garden**, which is now a spiritual paradise in heaven. (Revelation 22;) **one must be judged by the Word of God.**

**Impenitent sinners are sent into the fire.**  
(Revelation 20:10;)

**There is only One Way in and**  
**Jesus said He is it. (John 14:6;)**  
**He is the Gate. (John 10:7-9;)**

# **Outcome of the Fall. 3:8-10;**

**“Then the man and his wife heard the sound of the Lord God as he was walking in the garden in the cool of the day, and they hid from the Lord God among the trees of the garden.”**

**“But the Lord God called to the man, “Where are you?”  
He answered, “I heard you in the garden,  
and **I was afraid because I was naked; so I hid.**”**

# **Outcome of the Fall.**

**Psychological alienation. 3:7;**

**When self takes the centre,  
it's no longer good enough**

**We have to hide, change, & cover ourselves.**

**We don't know why we are the way we are  
Internal deception is possible and likely.**

**Jeremiah 17:9**

**The heart is more deceitful than all else and  
desperately sick; who can understand it?**

# **Theological alienation 3:8;**

**Shame and guilt,**

**Avoidance of God, Vacuum of authority,**

**Replacement of God**

**with self or self-made god.**

**This is the most important breach to heal!**

**2 Cor 5:19-20; “God was in Christ**

**Reconciling the world to Himself,**

**not counting their trespasses against them.”**

**Therefore, we are ambassadors for Christ,**  
**as though God were entreating through us;**

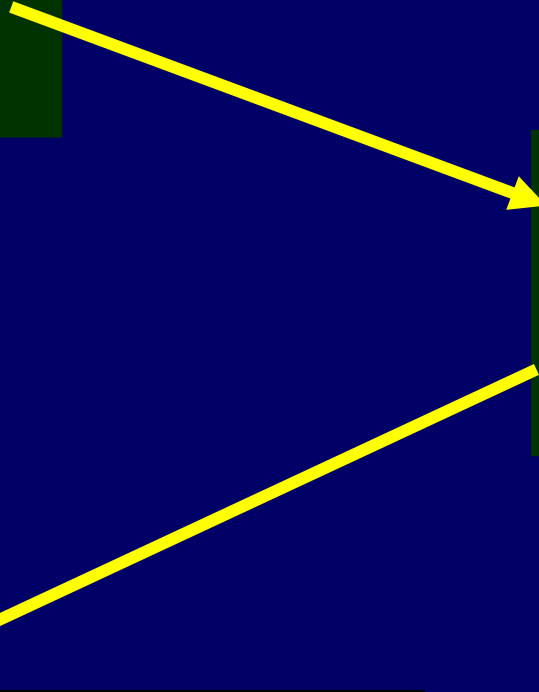
**We beg you on behalf of Christ,**  
**be reconciled to God!**

# True Recovery.

**Unashamed,  
uninhibited  
and free.  
Gen 2:25;**

**Ashamed, uneasy  
with self and afraid  
of God. 3:7-11**

**Freedom from shame,  
accepting of self,  
intimacy with God**



# True Recovery.

When self went to the centre, humans  
Became self-obsessed Although self-absorbed,  
we are not happy with self.

Dr. Wayne Dyer, Your Erroneous Zones: “Your self-worth,  
that friendly ever-present shadow, your consultant  
for personal happiness and personal mastery,  
must be unrelated to your self-assessments.

You exist. You are human. That is all you need.”  
Your self-worth is determined by you,  
and with no need for an explanation to anyone.

And your worthiness, a given, has nothing to do  
With your behaviour and feelings. You may not like  
your behaviour in a given instance, but that  
has nothing to do with your self-worth.” (p. 33)



# **True Recovery.**

**Sharon Wegscheider** -Curse, Learning to Love Yourself: finding your self-worth:

**“Self-worth can only come from the self.” (p. 76)**

**“We all need to feed our self-respect and self-confidence by affirming ourselves at least 10 ways each day . . .”**

**“Make one long list of the things you like best about yourself . . . and then transfer them to index cards. Put 10 affirmations to a card.”**

**“Each week tape one card to the bathroom mirror and read them each morning and evening. Change the cards each week.” (p. 118)**

# **True Recovery.**

**When self went to the centre, humans  
Became self-obsessed Although self-absorbed,  
we are not happy with self.**

**Placed back under God's leadership,  
self takes its true place.**

**Rom 8:16;**

**“The Spirit Himself bears witness  
with our spirit that we are children of God”**

**Shame removed: Heb 9:14;**

**“how much more will the blood of Christ  
cleanse your conscience from dead works  
to serve the living God?”**

**When self went to the centre,  
Humans became self-obsessed  
Although self-absorbed,  
we are not happy with self.**

**Placed back under God's leadership,  
self takes its true place.**

**With the shame gone, and self-worth settled,  
we can look away from self.**

**Other-centeredness becomes possible**

**Other-centered relationships**

**Are supremely psychologically healthy**

**We love, because He first loved us.**

**1 John 4:19;**

**Outcome of the Fall.**  
**Psychological alienation. 3:7;**  
**Theological alienation. 3:8;**  
**Sociological alienation. 3:12;**

**The man said:-**

**“The woman you put here with me  
she gave me some fruit from the tree,  
and I ate it.”**

**Why does getting into a personal relationship with God help deepen My ability to relate to other people?**

**BECAUSE WITHOUT GOD:-**

**I tend to define myself by my spouse.**

**No secure base from which to give!**

**I try to get what I want.**

**I am dependent on my other  
for my identity and unmet relational needs.**

# BECAUSE WITHOUT GOD:-

**I am dependent on my other  
for my identity and unmet  
relational needs.**



**Power relations  
determine who dominates.**



God

**We define ourselves  
by who God says we are,  
We don't need my other  
To define who we are.  
Our relational need  
for unity is met by God.**

**Instead of dependence on others,  
We are free to GIVE from  
OUR abundance, when we are  
in a right relationship with God.**





God

**No longer what he wants  
or she wants,  
Now it's what God wants!**

**The closer we grow to God, the  
closer we ought to grow to each other.**

# True Recovery.

**Profoundly  
relational.**

**(pseudo-love)  
Sociological  
alienation**

**Real love = The heart  
of Christian living**

**1Jn 4:7-8; “Beloved, let us love one another,  
for love is from God; and everyone who loves  
is born of God and knows God. The one who  
does not love does not know God, for God is love.”**



# **Don't be like Adam!...**

## **ADAM, SIN AND DEATH.**



**Genesis 2:16-17; 3:1-19;**

**Sin's source:-** Temptation. - 1 Tim 2:14;

**Sin's form:** Unbelief and disobedience.

1 John 3:4;

**Sin's effect:-** Death, shame and guilt. –

Gen 2:17; 3:8-10;

**Sin's entrance into the world:-** Romans 5:12;

**Redemption:-** Genesis 3:15;

# **BE LIKE ADAM!**

## **ADAM A TYPE OF CHRIST.**

Romans 5:14;



**The Spirit of Man:-** Adam and Christ in:-  
Romans 5:14-19;

**The Flesh of Man:-** Adam and Christ in:-  
1 Corinthians 15:21-22, 45-49;

# LESSONS FOR US.

God wants and expects us  
to make the right choices when tempted



Our responsibility to God  
mirrors the privileges received from Him.

**Fellowship with God is precious:-  
Do not take it for granted.**

**Marriage is special:-  
Do not defile, discard or disrespect it.**

**We cannot hide from God.  
Accept responsibility for our OWN sin,  
and REPENT of it.**

**Faithful living must follow a good beginning.**



# THE PATRIARCHAL AGE

**CREATION  
GARDEN of EDEN  
SACRIFICE FOR  
*SIN***

**WICKEDNESS  
THE FLOOD**

**ABRAHAM & ISAAC**

**JACOB & JOSEPH  
JOSEPH IN EGYPT  
MOSES BIRTH  
MOSES FREES  
ISRAEL**

**God Spoke To the Fathers**



**SACRIFICE FOR SIN** now became necessary!

**Adam and Eve** had **turned their backs** on their Father, and they of themselves **could never pay the price for their sin.**

**Mankind was forever doomed.**

**But God again** showed His **compassion** for man by providing that **animals could be sacrificed to atone for sin.**

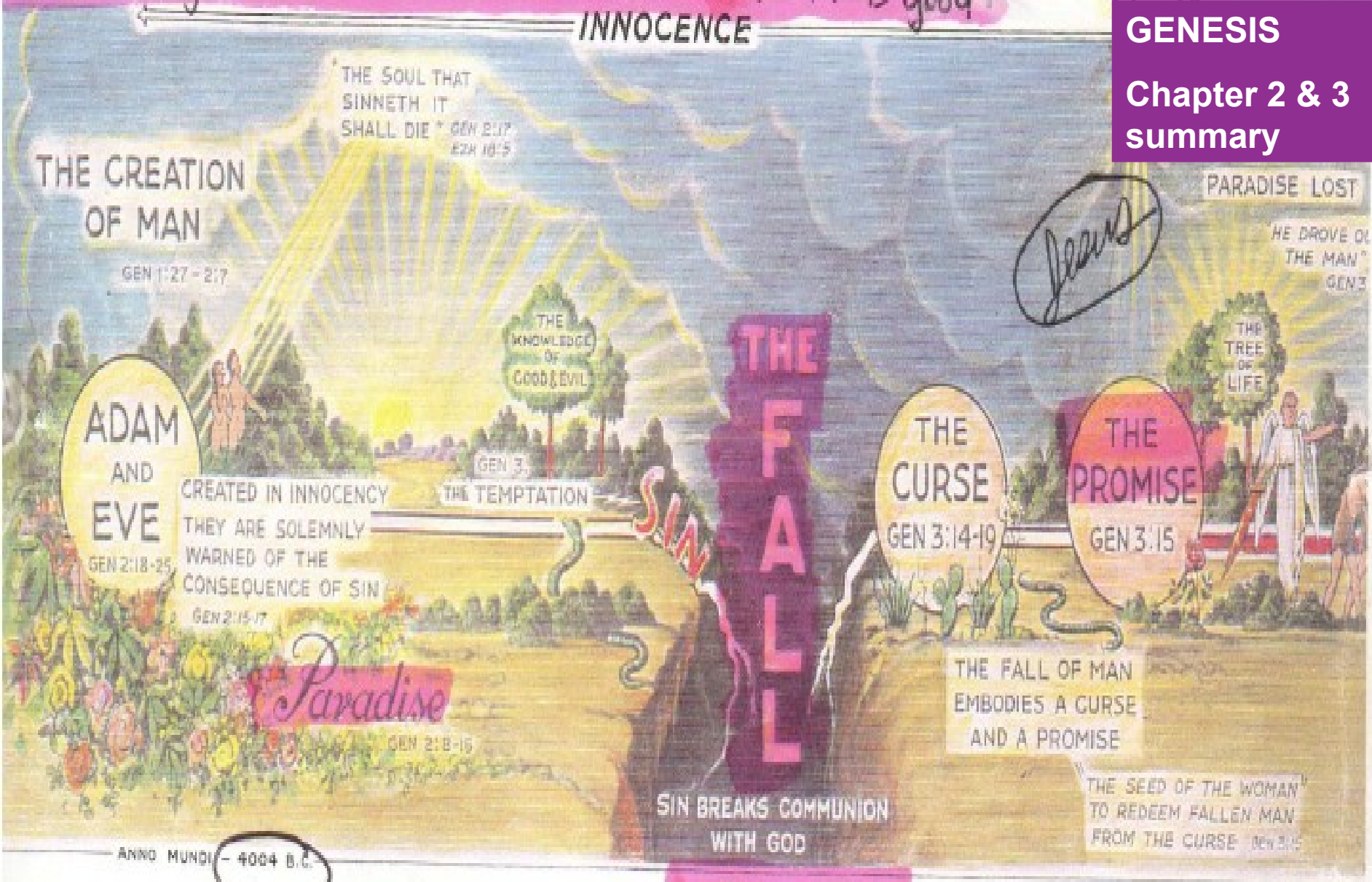
**God was just in making this arrangement**  
**For He knew that Jesus, the Perfect Sacrifice,**  
**would eventually be offered**  
**to pay the full price for all sin.**

**Romans 3:23; Hebrews 9:13-14;**

# INNOCENCE

## GENESIS

### Chapter 2 & 3 summary



THE CREATION OF MAN • THE TEMPTATION • THE FALL AND PUNISHMENT • THE PROMISE • THE EXPULSION

**In the Beginning God.**

**Man a living Body and Soul.**

**Adam and Eve in Paradise:- Fellowship.**

**The Enemies Tactics.**

**Choices DO have consequences.**

**Significance of the Fall into Sin.**

**Paradise Lost.**

**Redemption set in motion.**

**God had a plan / The Master's Plan.**



There has **many important lessons** to be learned from these few chapters.

They explain so much about man's relationship with God and each other.

Man **lost the opportunity** to live in a beautiful garden forever because of his **failure to trust his Creator and Benefactor.**

**Now we all must physically die after we have served our time of probation on this earth.**





**THE WAY BACK.**

# **A Way Back,**

**Thankfully, God has provided a way  
Back to fellowship with Him in a more  
beautiful garden in a heavenly paradise.**

**But it cost Him the most precious  
Treasure in heaven, His Only Son.**

**What a wonderful Father! How can anyone  
turn down His free offer of eternal life?**

**Go through His Son to salvation and eternal  
life today. Today is the Day of Salvation.**

**ARE WE LIKE ADAM.**

**In disobedience...?**

**Or**

**In being obedient to God?...**

**The choice is OURS!...**

**Revelation 2:7;**

**“...To him who overcomes**

**I will give to eat from the tree of life,**

**which is in the midst of the Paradise of God.”**

# **Gen 3:14-24; Sins Consequences.**

**Prepared by  
Graeme Morrison**

**[graemestudy@gmail.com](mailto:graemestudy@gmail.com)**

**[www.graemebibleresources.com](http://www.graemebibleresources.com)**

**Next in the series:-  
Gen 4:1-17; Cain and Abel**